

Local Talk Back

FEBRUARY 2020

ISSUE 501



Sunset over the Cotswold Edge. Picture by Yvonne Nettles



A MAGAZINE WITH NEWS, VIEWS AND REPORTS FOR THE RESIDENTS
OF ACTON TURVILLE, BADMINTON AND LITTLE BADMINTON

FEBRUARY 2020 --- CALENDAR

Sun 2 nd	Bingo at Badminton Village Club – doors 7pm, eyes down 7:30pm
Mon 10 th	Acton Turville Parish Council Meeting – Trinity School 7pm
Wed 12 th	Acton Turville Luncheon Club at The Fox & Hounds - see advert
Fri 14 th	Didmarton Cinema – ‘Downton Abbey’. Village Hall, doors 6:30pm - see advert
Sun 16 th	Bingo at Badminton Club - doors 7pm, eyes down 7:30pm

NEWS!! NEWS!! NEWS!!

You might have noticed the Lidl supermarket in Yate is closed. LTB understands it will remain closed for another four months. It sounds like it's undergoing a major re-development too – the extension and refurbishment of the store will create an expanded sales floor and a much larger in-store bakery, as well as new customer toilets and a new-look store front. Expect it to re-open in May.

Another outlet receiving a re-fresh is the ever-popular Hampton's Deli and Café in Chipping Sodbury. We can't wait to get down there and see the new look; Hampton's should be open again by the time you receive this edition of Local Talk Back as the opening date was January 21st.

Cover Shot

We hope you like this month's cover. It's a picture taken by Yvonne Nettles capturing one of the recent spectacular sunsets that we experienced earlier in January. Apparently the sunsets were down to some quite unusual conditions that saw the sun reflecting off a very thin layer of cloud relatively high in the atmosphere. That in itself is not especially unusual, what made the difference was a lack of clouds lower in the sky to obstruct the view and disperse the colours, which made what we saw that much more vivid. We're always on the lookout for interesting shots to put on the cover of Local Talk Back – if you have anything suitable, send it to the usual address and we'll see what we can do.

Local Talk Back is printed by

SPRINT PRINT, 33 STATION ROAD, YATE, BS37 4PS

Tel: 01454 852255 or email: info@sprint-print.co.uk

Items for Local Talk Back email to: localtalkback1975@gmail.com Tel: 01454 218267

To advertise in Local Talk Back, please email Pauline on: LocalTalkBackAds@gmail.com

PLEASE SEND IN ARTICLES FOR THE MARCH LOCAL TALK BACK BY 15TH FEBRUARY

LIST OF BUSINESSES ADVERTISING IN THIS TALK BACK

**(if using these advertisers please tell them that you
saw it here in the Local Talk Back)**

- 4 COUNTIES OIL TANKS
- BELGRAVE HOUSE DENTAL
- CHIMNEY SWEEP, FRENCHAY
- CHORLEY'S Auction Valuations
- CLAPCOTE FORESTRY LIMITED - SAWMILL
- COACHSTYLE MOT TESTING STATION
- D. J. MAYHEAD ELECTRICAL SERVICES
- FARM SHOP AT HAWKESBURY
- FOOT HEALTH CARE
- THE FOX & HOUNDS INN, ACTON TURVILLE
- FOXLEY PLUMBING & HEATING
- HELPING HAND – Care in the home
- LB COMPUTER SERVICES
- MARDEN ROOFING
- MARSHFIELD & WICK TAXIS
- MATTHEW BUTLER BOOKS
- M & M BUILDERS AND CARPENTRY
- THE OLD HOUSE AT HOME INN, BURTON
- PJD HOME IMPROVEMENTS
- PRIOR & COMPANY - Building, Renovations etc.
- PUMPKINS NURSERY
- STW MAINTENANCE
- VILLAGE LINK – Community transport
- WESSEX RESOLUTIONS - Loans for homeowners

DONATIONS RECEIVED THIS MONTH

*We have received the following donations
this month for which we are very grateful:*

A Packer - £25

Anonymous - £20 and £25

Badminton Social Club - £50.

*In addition, £55.00 was generously donated
in the local shop boxes.*

Thank you!

*We very much appreciate all donations as it
helps to keep the Local Talk Back being
delivered to your doors.*

*There are Local Talk Back collection boxes in
Acton Turville Stores, Badminton Stores and
Badminton Village Club.*

To donate by cheque, please make payable to:

LOCAL TALK BACK and send to

The Treasurer, Local Talk Back,

Church Farm House, The Street, Acton

Turville, Badminton, S.Glos, GL9 1HL

MORSBAGS

Thank you so much to all those who have given me material to make Morsbags.

I have finished 680. Acton Turville Stores and Drewitt's Store have given away over 500, with donations to Village Link and Local Talk Back. The remainder have gone to Calne to help their plastic-free projects.

Any more material will be gratefully received!

Belinda Elford Tel 01454 218362

EDITORIAL FEBRUARY 2020

There was no Local Talk Back in January so this is the first edition of 2020. On that basis, may we wish you all a very Happy New Year. 2020 has a nice sound to it, and a pleasing symmetry; it feels like it should be a significant year. It's got off to a mixed start. We've had the devastating bush fires in Australia which have seen vast swathes of land, and tragically many of the animals that inhabited them, decimated. At the opposite extreme, we had the sort of rainfall in January that made Noah's decision to build his ark look like a particularly astute move – I came home from Chippenham to find The Street flooded from kerb-to-kerb with a torrent of water heading for the well. I was looking to see if I could spot animals gathering in pairs. You'll read elsewhere that the Acton Turville Parish Council have contacted South Glos Council requesting urgent action to unblock drains, and it's pleasing to note the work that's gone into clearing drainage ditches alongside several areas of farmland. Thankfully we don't experience such rainfall regularly, but the effects of flooding can be traumatic.

2020 has also seen environmental issues placed firmly on the agenda. In many ways it's nothing new, and the environmental movement can trace its roots back to the sixties. In those days it was specific issues such as nuclear power that caught the attention of a relatively small sector of the population. Now the scope is far wider - it's man-made global warming that's attracting the attention, and those who want to see action being taken come from a much broader spectrum. Whilst there also appears to be much greater acknowledgement of the factors that are causing this warming, it's clear that addressing them will be a major challenge for everyone. I wonder if the real significance of 2020 will be as a watershed year for the environmental movement?

Until the next time

IAN CARTER

SANDRA BROOMSGROVE

As LTB closed for press, we received the sad news that our friend and colleague Sandra Broomsgrove had tragically passed away. Along with Yvonne and Sally, Sandra was one of the Three Country Girls who contributed so much to Local Talk Back over many years, and helped make the magazine what it is today. To her friends and family, to Yvonne and Sally, and especially to Claire, we send our deepest sympathy and offer our heartfelt condolences at this difficult time.



BERYL, wife of the late Percy **Pounsberry**, passed away recently, leaving four children – Joan, Jill, Robert and Colin. Beryl grew up in Bristol and during the war was in the Land Army. She came to live in Little Badminton in 1973 with Percy and youngest son Colin where Percy was originally a groom for the Duke of Beaufort. He later became a local postman. Beryl worked for the Duke and Duchess of Beaufort in Badminton House until way past retirement age. Beryl was a founder member of the Valentine Club in 1980, finishing as Club Secretary in about 2008. Our condolences go to her family, especially Colin who had cared for Beryl over the last few years.



Our thoughts are with Philip Tucker who, very sadly, lost his brother **David Tucker** on Christmas Eve and his sister **Joan Pritchard** on Christmas Day. The family had lived in Little Badminton for many years before moving to Acton Turville about 1984. Philip and David had shared a house in Acton Turville and Joan had lived with her family in Yate. We send our condolences to Philip and to Joan's husband Trevor and sons Andrew, Simon and families.



1996 – Kathleen Gentry not only kept us in touch with day to day life but what life was like in her early years of the 1920's onward.

Kath begins her first editorial of 1996 by telling about the great

party that the Valentine Club gave to the senior citizens, in fact Kath wrote a good review of the party every year.

She said "So nice to meet up with folk one hadn't met since last year – and some farther back! It was good to see Rev. and Mrs Gibson back in the village and looking so well." *[they had left about six years earlier]*

"The entertainment was in a class of its own. The songs and sketches took me back over the years to the days when our own concert party was going strong. The lady who sang 'My Old Man Said Follow That Van' could have been my own mum back again" Kath thought Father Christmas got younger each year, and that the food and wine was lovely and beautifully served.

In the February issue Kath told of the snow and some 'rather nasty icy roads' and the fact that, in the garden, hyacinths were peeping through with crocus and snowdrops. The birds had been very hungry. She so enjoyed watching all the birds in her garden and witnessing the squabbles and feeding habits between the different birds.

It seems the Fun Run from the Fox and Hounds had been postponed from New Year's Eve, no doubt because of the weather.

In the March issue Kath's thoughts were taken back to the hey-day of Drewett's Stores in Badminton after reading Mr (Fred) Ayliffe's memories of working there, and it concentrated her mind on how different things were back then.

She wrote "We children could play unhindered, and roam for miles without our parents needing to worry. A bottle of lemonade, a few jam sandwiches and an apple and we were happy to be out of Mum's hair until tea-time. This was not just true of the countryside either. I had a cousin who lived in Bristol and spent a few days each summer at her house. Can you believe that we would take a ball or skipping-rope

and would spend hours in Eastville Park. It seemed the whole World was at peace. News came from newspapers as we didn't have radio or television to bring us events as they happened. Our family's first radio was built by my Dad. It was a crystal set with coil, condenser and a silver crystal. A fine wire, called a Cat's Whisker, had to find just the right spot on the crystal to bring music and voices out of 'space'"

Kath felt life was more peaceful but, in many ways, much harder. They had no car, no TV, no washing machine, no Hoover and no computer. How backward they were compared to her Aunt in Bristol who did have gas-lighting and a 'flush lavatory'. Kath thought that over 70 years later they should have been happier but pictures of strife were on the TV – bombs in London, Civil war abroad and thousands of homeless around the world.

When Kath looked back to the 'old days' with nostalgia she would think of Monday washday- her mum lighting the fire under the 'copper' (boiler) to start the wash and then rubbing and scrubbing everything by hand – then her thoughts would return to the present day and she would switch the kettle on and go and watch the snooker on the telly!

In April she told us of the bygone Easter traditions, feeling now (1996) that Hot Cross Buns had lost their magic as they had been on sale for so long. Years before they were delivered hot and fragrant to the door on Good Friday morning. Three bakers came from Hawkesbury – two with vans and one with a vintage car – the trays of buns being covered with snowy white cloths. Easter Day meant boiled eggs for breakfast, some with faces painted on and some coloured by tying onion skins round them or adding Cochineal food dye to the boiling water. Onions skins and coloured wool gave a marbled effect.

Little Badminton Church was always lovely for Easter with bunches and bunches of Primroses that the children had gathered the day before in Swangrove wood. Kath was sad that you are not allowed to pick wild flowers now.

In May Kath talked of the Badminton Horse Trials – "the time when 'the World and his wife' arrived on our doorstep. I remember the very first Three Day Event (1949) it poured with rain and the riders were mostly wearing jockey-type silks."

Kathleen Gentry's Editorials continued.....

In June 1996 Kath reminds us that we are back in Gloucestershire – sort of? “There was much song and dance at the birth of the county of ‘Avon’ that it seems odd that our return to ‘Glos’ and the death of a county few wanted should be so quietly accepted. And of course, we actually ended up in ‘South Gloucestershire’. [we have lived in three counties without moving anywhere]

When writing the October 1996 editorial at the end of September we learn that 57 years ago on that day Kathleen and Alex were married in Badminton Church. He was on a 48-hour pass from his unit in the Royal Tank Regiment and was looking so smart and handsome in his Sergeant’s uniform. As they left the Church they walked down the steps from the porch under a wrought iron archway, covered with pale rambling roses. The arch later went, patriotically, for the war effort. The roses just went, to be followed by a fragrant lavender hedge.

November and half term made Kath think about her own school holidays and she tells us “I remember when every Holy day was a holiday, or rather half-holiday. We were taken en masse to Church in the morning, and the rest of the day was ours. Lady Day, Ascension Day etc., all celebrated in this way. Added to this there was a half-day free when the School Inspector called or perhaps a visit from the Bishop.

“On one occasion when the Park Pond was deeply frozen over, we went as a body to slide or skate over the surface. The pond was crowded with people that afternoon. I don’t think the children suffered too much educationally. We were taught the ‘Three Rs’ plus Music, History, Geography, Biology and certainly English Literature. Reading Shakespeare, with each child in the class taking part, was fun. I don’t remember any who were totally unable to read on leaving school.

YATE HERITAGE CENTRE, CHURCH LANE, YATE

Between St Mary’s Church and The White Lion Pub

OPEN 10.30am – 4.30pm Tues, Wed, Thur & Sat [Tel: 01454 862200]

NEWMAN INDUSTRIES

If you had worked at the factory of Newman Industries in Yate, or had a relative who did, you may be interested in the Exhibition about Newmans at the Heritage Centre.

From Wednesday 29th January 2020 10.30am until Wednesday 25th March at 1130am
Open days as above.

Newman Industries was where Morrisons and B& Q are now, and Pool Court Register office building was a part of the firm’s offices.

This is a major feature of the economic, social and physical history of the Yate area. An outstanding collection of photographs, film and artefacts tell the story of Newman Industries and its effects on recent generations of local people.

HORTICO NURSERY AND GARDEN CENTRE

Pinkney, Sherston, Wiltshire SN16 ONX - Tel: 07887 508880

Now with a NEW COFFEE SHOP

Plant Centre open 7 days a Wee

From the Archives

This month we have a pair of transport-themed views.

The first shows the railway station at Badminton. The station opened in 1903. Interesting fact; in addition to the four passenger trains that stopped daily at the station, a covenant signed between the Duke of Beaufort and the GWR required any other train to stop if a first class passenger wished to alight. As well as the through traffic, a significant number of trains terminated at Badminton, presumably bring people and their horses to the regular hunts. All this came to a halt when the station closed in 1968.



Our second picture was taken in Acton Turville. If you've ever wondered what used to stand on the site now occupied on The Street by the imposing property call The Old Garage, here's your answer: an old garage. There's nothing to say when this picture was taken but, judging by the cars, it must be around the time of the First World War, possibly the early twenties.



ACTON TURVILLE PARISH COUNCIL

Meeting Monday 13th January 2020

Please! No Dogs are allowed on the playing field or in the play area.
All gates must be kept shut. No vehicles are allowed in or on the playing field except by permission of the Parish Council. Please put all litter in the bins provided. Thank you.

Power Cuts and Vulnerable residents

All residents are reminded of the simple contact number which should be used to report or check on Power Cuts. This is 105.

It can be used to enquire about power failures and obtain information about how long outages are likely to last.

If you or anyone you know is elderly, has health issues or requires power for vital medical equipment you can register with Western Power so that you will receive priority and assistance in the event of a power cut. To register contact your electricity supplier or email to wpdpriorityservices@westernpower.co.uk. Western Power can also be contacted on 0800 096 3080.

Drains in the village

Following recent heavy rain, The Street and several other areas were flooded. The PC has again written to South Glos Council requesting urgent action is taken to avoid further problems. Network Rail has also been advised of the problems as overspill water is flooding onto the Rail Lines.

Anyone who is aware of a blocked drain or is concerned about the flooding is asked to help by reporting direct to South Glos <https://www.southglos.gov.uk/general-information/online-services/report/>

and click on 'blocked drain' OR direct by phone on 01454 868000. The more reports they receive about a problem, the more likely they will be to treat the problem as a priority

Community Fridge

More information on this subject is available on the PC website under 'District Councillors Report'. The scheme provides a refrigerator into which people can place unwanted perishable food which can then be collected by ANYONE in the area. The idea being to reduce waste. If this scheme is adopted it is necessary to find a suitable location and someone to check it regularly and clean it out etc. If there proves to be interest the matter could be progressed further.

Badminton Estate – Proposed Development

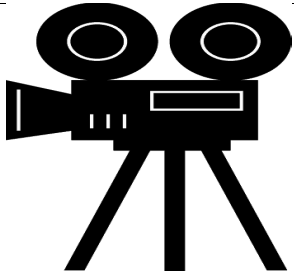
This matter is now in the hands of South Glos Planning Department.

Chris Farrell (Chair) 219483, Sybil Haddrell (Vice Chair) 218772, Sally Smith 218510,
Chris Bennett 218550, Toby Evans 219116

NEXT MEETING – Monday 10th February 2020 Time: 7 p.m.

Venue: Trinity School. Parish Clerk: Sue Radford-Hancock Tel: 218675

Email: actonturvillepc@aol.com Website: www.actonturvilleparishcouncil.org



Didmarton Rural Cinema
The Village Hall
Friday, 14th February 2020

Downton Abbey

The beloved Crawleys and their intrepid staff prepare for the most important moment of their lives. A royal visit from the king and queen of England soon unleashes scandal, romance and intrigue -- leaving the future of Downton hanging in the balance

Doors open at 6.30pm with cash bar - Film show starts at 7.30pm
 Ticket £4.00
 Contact jennybody@btconnect.com 01454238358 to confirm seat

Sudoku

February's challenge set by Neil Fozard

To solve the puzzle, each row, column and 3x3 box must contain each of the numbers 1 to 9.

EASY !!

			6					4
					8	5		2
					9	1	8	
8							4	
				1		8		
	4	5						7
	5	4		8				6
		9	5				2	
3	6				1	4		9

NOT SO EASY !!

	5		4		1		9	
1								4
4								8
7			2		4			3
2		9	3		5	7		6
8								7
		6				4		
	3		5	4	6		8	

Answers to the December quizzes:

'Easy'

1	8	3	7	9	6	5	4	2
9	2	7	5	4	3	8	1	6
5	4	6	1	8	2	3	9	7
6	3	5	9	2	7	1	8	4
4	1	9	6	3	8	7	2	5
8	7	2	4	1	5	9	6	3
2	9	1	3	7	4	6	5	8
7	6	8	2	5	1	4	3	9
3	5	4	8	6	9	2	7	1

'Not so Easy'

8	3	5	2	9	4	6	1	7
7	2	6	5	1	3	4	9	8
1	9	4	6	7	8	5	2	3
2	4	3	7	8	9	1	6	5
5	7	1	4	6	2	8	3	9
9	6	8	3	5	1	7	4	2
4	5	7	9	2	6	3	8	1
3	8	9	1	4	5	2	7	6
6	1	2	8	3	7	9	5	4

The Fox & Hounds Luncheon Club

We enjoyed a really lovely Christmas party on December 11th. Following our delicious Christmas luncheon with a Christmas pudding which we all thought was excellent, we were entertained by singer Richie C. He sang lots of 60s songs that the audience could sing along to, and asked questions of who we thought had sang them.

To finish we all stood and sang Auld Lang Syne and wished each other a Merry Christmas and Happy New Year.

Our first meeting in the New Year was on January 8th. Our lunch choices were roast chicken or scampi, both were very good.

30 to 40 people join us for lunch each month. New faces are always welcome. We pay only £7 and for that we have a two-course lunch and coffee. We arrive between 10.30 and 11 am and our next meeting is on February 12th perhaps we will see you.

If I can help you with any more information please ring me on 01454 218510 - Sally



THE CHRISTMAS SANTA TRACTOR RUN

These tractors were travelling through Badminton Park, having started their journey at Lygrove Farm



For the Charity 'FRIENDS OF HUCK' which was established by professional Moto Cross rider Mark 'Huck' Hucklebridge with his wife, Emma. Huck had been diagnosed with terminal cancer when he set up the charity which provides assistance to sports people living in the UK experiencing hardship caused by serious ill health or injury and supports cancer charities. He sadly lost his own battle but his family and friends have continued with the charity which is supported by this tractor run and many other fund raisers. This Santa run happens on the Sunday before Christmas each year.

Councillor Pat Trull - December 2019 Report

Community Fridge

Food waste is responsible for 10% of global greenhouse gas emissions. An estimated 15 million tonnes of food is wasted each year in the UK, enough to fill Wembley Stadium 18 times over. At the same time 4 million people live in food poverty in the UK. To tackle this issue in May 2016 Frome Town Council worked with Edventure and a team of volunteers to set up the UK's first community fridge. A community larder was launched in October 2018 to accommodate items that don't need to be cooked. The success of the Fridge, has helped to inspire more than 60 community fridges to open across the country – linked in with Hubbub's Community Fridge network. It also featured on Jimmy and Jamie Oliver's Saturday Night Food Feast in 2017 and Country File in February 2019.

We always need more people to get involved. If you would like to volunteer or find out more contact Nikki at: fridge@edventurefrome.org or call Anna at Frome Town Council on 01373 488579. More details and an open source toolkit can be found at <https://edventurefrome.org/enterprises-initiatives/fridge/refrigeration>.

The above might inspire someone to start a similar project. It's pretty shocking to find out that food waste is responsible for 10% global greenhouse emissions.

Work underway on new supported living project for 18 young people

Work has started to convert the former care home at Woodleaze in Yate into a Young Person's Supported Living Scheme for 16-25 year olds, including care leavers, who need additional support to help equip them for independent living. The new facility, which will provide 18 self-contained units and space for a range of other support services to be delivered on site, is expected to open in May.

Young people will also be able to access a range of support and advice around key life-skills, and accessing training and job opportunities.

It's time to change

Chief Executive Dave Perry has signed the 'time to change' pledge showing the council's ongoing commitment to ending the stigma around mental health. We're extremely grateful to the four colleagues who shared their experiences with poor mental health.

Western Power

The electricity and gas networks have come together again to help members of the public prepare in case they have a power cut or gas emergency this winter through its annual 'Be Winter Ready' campaign, which is launching on 2nd December.

We're contacting you as it would be great if you could help share this important information through your channels to help spread the word about the campaign.

While electricity supplies are very reliable, bad winter weather can cause damage and disruption. As the nights get colder and darker, the chance of experiencing severe weather becomes more likely. Storms, floods and other extreme conditions can cause damage to the electricity network and disrupt energy supplies.

We are therefore sharing this simple advice to help people prepare. To Be Winter Ready, we're urging the public to:

Know your free emergency numbers - in a power cut call 105 or, for a gas emergency, dial 0800 111999.

Prepare your home – keep a torch handy and get your appliances serviced by a Gas Safe registered engineer to prevent carbon monoxide poisoning. Vulnerable households can also get extra support by signing up to the Priority Services Register.

Keep your eyes open – keep an eye on the weather forecast and, if you have a power cut or a gas **emergency, check on your neighbours.**

Councillor Pat Trull - December 2019 Report (cont'd)

The Priority Services Register

The Priority Services Register is a free service provided by the company and is eligible for anyone who is of a pensionable age, disabled, has children under 5 years old or relies on medical equipment.

As part of the service, customers are kept informed as much as possible of power cuts affecting their home and are given special help, if needed, through the British Red Cross.

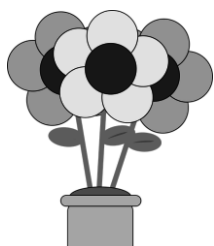
The Priority Services Register offers peace of mind for vulnerable customers and their families and we do our very best to ensure that their needs are met at all times.

We already have 1.8 million customers on our register.

To find out more information or to register, please call us on 0800 096 3080 or visit www.westernpower.co.uk/psr.

See also <http://www.energynetworks.org/news/public-information/be-winter-ready-toolkit.html>

Councillor Pat Trull – pat.trull@southglos.gov.uk



J J'S GARDENING BLOG

It's so ghastly outside, the plants are probably rotting No they're not, just teasing! But what is really nice at the moment are scented bulbs in pots, indoors. A waft of scent really lifts the spirits. In the garden centres and supermarkets some planted and ready to go are good value, and once they have finished flowering and the goodness from the

leaves have gone back into the bulb i.e brown leaves they can be planted into the garden, or into pots with fresh compost.

Job for this Month

The greenhouse may need some spring cleaning and cold frames too. Wash the glass, have a sort out and tidy up. Do some handles need replacing, a new broom or treat yourself to some new secateurs. It's a good time to keep a notebook and do some planning. What plants or vegetables have done well, should something be moved to a drier, shadier brighter position.

Of course, just a reminder to rotate your veg. crops next season, but for now add about four inches of compost to those beds and cover then with whatever you have. Old carpet etc whatever excludes the light. This warms the soil and keeps it weed free.

And finally...

It's time to visit gardens that open now to show their marvellous collections of snowdrops, it does give one a warm glow.



Pauline Henson snapped these pictures of Snowdrops in the Church Yard

Church Matters

Badminton Benefice Rota for February 2020

	February 2 nd	February 9 th	February 16 th	February 23 rd
Great Badminton				
Little Badminton		11:15am Mattins Tony King		11:15am Mattins + HC John Hunnisett
Sopworth			11:15am Mattins Mike Swain	
Didmarton	11:10am Mattins Rob Axford		8:30am BCP HC John Hunnisett	
Acton Turville		9:30am BCP HC Richard Morgan		09:30 Mattins Roger Wookey
Boxwell				
St Arilds, Oldbury on the Hill				
Leighterton		11:00 am Mattins Chris Andrew	9:40am BCP HC John Hunnisett	
Lasborough	9:30am Mattins Roger Wookey	9:30am BCP HC Peter Cheesman		9:30am CW HC Peter Cheesman
Hawkesbury	9:45am CW HC + Baptism Richard Morgan	5:00pm Evensong Lay Led	9:45am Family Service Lay Led	5:00pm BCP HC John Hunnisett

ST. MARY'S CHURCH, ACTON TURVILLE ***100 Club***

WINNERS FOR DECEMBER 2019

Roger Orton

Rebecca Rennie

Mick Bell

WINNERS FOR JANUARY 2020

Rupert Monyard

Bridget Hope

Lee Butcher

Congratulations!

The Farm Shop at Hawkesbury

- a proper farm shop -

Open Fridays 2pm - 6pm & weekends 10am - 4pm

Free Local delivery

01454 238215 / 07929947149



Finest quality Pork, Lamb & Aberdeen Angus Beef
"Hawkesbury Born, Hawkesbury Bred, Hawkesbury Fed"
"The Water Hog" Pig Roasts with all the trimmings!
France Lane Farm, Hawkesbury Upton, GL9 1AN.
www.ajmorganfarmproduce.com

HOME COMPUTER PLAYING UP? NEED SOME HELP? DON'T DESPAIR!

For help with:

- Windows XP, Vista, 7, 8, 10 and Tablets
- The Internet, Wireless Router Setup
- Hardware Upgrades and Repairs
- PC's Custom Built to order

No problem too small or large!

Contact Lloyd Buckingham

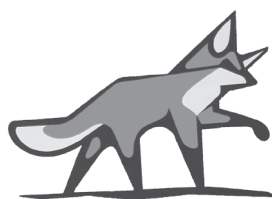
Tel: 07940155064 or 01454 260504

Email: lb_cs@hotmail.com

LB Computer Services



YOUR LOCAL, LOW COST,
HOME COMPUTER REPAIRER



**The FOX
& HOUNDS INN**

Acton Turville, nr Badminton
GL9 1HW

01454 218224

Good Home Cooked Food
All occasions catered for - contact us for details

TAKEAWAY FISH & CHIPS
TAKEAWAY MENU AVAILABLE

Binend Wines from £14.50 per bottle

BEER GARDEN & LARGE CAR PARK

B&B accommodation available
All En-Suite

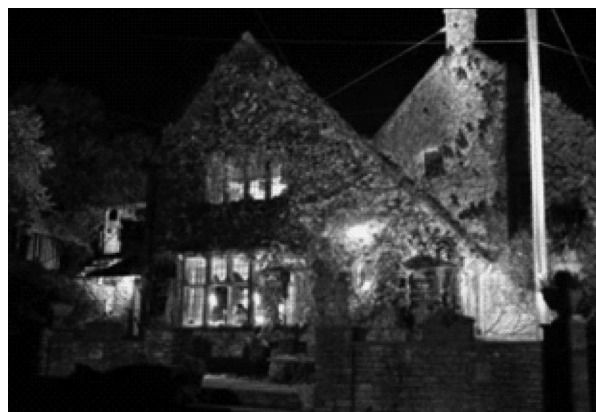


The Old House at Home

Burton

Telephone 01454 218227

www.ohhpubs.co.uk



Food served all day, every day
12 noon - 9.30 p.m.

Gourmet Burger Night

Every Thursday

All Burgers £10 (G/F available)

Take-away available

To advertise your business or club, please email:
localtalkbackads@gmail.com



PUMPKINS NURSERY

Badminton & Tormarton

Nursery Care and Pre-school Education
catering for children aged 1 year – 5 years
Open all year 8am – 6pm

Pre-school sessions, mornings/afternoons/school days
Nursery Education Grant funded sessions available
Forest School sessions run at both settings
For more information or to request a prospectus
contact

01454 219400 / 218747

or email Amanda Wallis at

enquiries@pumpkinsnursery.co.uk

or visit our website **www.pumpkinsnursery.co.uk**

MOT TESTING STATION

COACHSTYLE has an **MOT** station at its
depot at **The Gibb** able to test Cars, Vans,
Camper Vans and Mini Buses

We now do air-conditioning as well as
service and repair on any vehicle

TYRES at competitive prices
General Servicing and Repairs

01249 783366

Ask for Andrew



MATTHEW BUTLER BOOKS

Old Garage House, Acton Turville

butler.books@btinternet.com

01454 218036

Good quality and antiquarian books valued,
bought and sold. Specialities: Architectural
History, Archaeology and Art History.
Browsing by appointment



- Corns
- Nail Trimming
- Verrucae
- Hard Skin
- Athletes Foot
- Ingrown Toenails
- Nail Infections
- Cracked Heels (fissures)

Clinic available at
The Chippenham
Natural Therapy Centre
(above the Lodge Surgery)
Tel: (01249) 443390

Home Visits:
Tel: 01666 838683
Mob: 07593 324128

The Oxford Practice
5 Oxford Street
Malmesbury
Tel: 01666 824560
www.foot-health-care.co.uk

**foot
health
care**

Sina Ohms
MCFHP MAFHP
Foot Health
Practitioner



**Belgrave
House**
DENTAL

General Family Dentistry
Crowns and Veneers
Bridges and Dentures
Six Months Smile (tooth
straightening)
Invisalign (clear braces)

Dental Implants
Tooth Whitening
Hygienist
Nervous Patients Welcome
Children under six seen free
of charge

Belgrave House Dental is a state of the art dental practice
in the centre of Tetbury.

We are currently welcoming new patients, so come and
experience customer care from our highly qualified team
offering a wide range of treatment in a stylish welcoming
environment.

Tel: 01666 503403

Email: **reception@belgravehousedental.co.uk**

www.belgravehousedental.co.uk

8 Market Place, Tetbury, Gloucestershire GL8 8DA

Local Talk Back

Local Talk Back relies on advertising revenue and donations to cover publishing costs

Advertising Rates

B&W (per month)

Half page £20
Quarter page £10
1/8th page £7
1/16th page £5

Advertisers booking for one year in advance (11 issues) only pay for 10 issues



If you would like to advertise your business or club, please contact:

LocalTalkBackAds@gmail.com

01454 218042

07855 347103

To advertise your business or club, please email:
localtalkbackads@gmail.com

Plumbing & General Maintenance



Stewart White

07341 824612

info@stwmaintenance.com

44 Easton Town | Sherston | Malmesbury | SN16 0LS



4 COUNTIES OIL TANKS

SUPPLIED & FITTED

Call: 01666 510510
Mobile: 07966 690807



PJD Home Improvements
All types of DIY, painting, decorating
and garden maintenance

Paul John Davidson
3 Corvus Cottages
Station Road
Badminton
GL9 1EP

Ring or email for competitive quote
07766680161 or 01454 219371
paul.davidson123@btinternet.com

M & M Builders And Carpentry
GENERAL BUILDING AND LISTED PROPERTY

Mike Brazier

M: 07779944773 T: 01454 218765
mikebrazier50@gmail.com
www.mandmbuild.co.uk




3 Tormarton Road, Acton Turville
Badminton, S.Glos, GL9 1HP

Foxley Plumbing & Heating

Oil boiler installation, servicing & repairs
Oil tank replacement
Heating installation & repairs
Bathroom installations
Unvented cylinder systems
No job too small

Tim Hibberd
Malmesbury (01666) 822863
Mobile: 07966 462202
Email: foxleyph@btinternet.com



D. J. Mayhead
ELECTRICAL SERVICES
DOMESTIC * INDUSTRIAL * COMMERCIAL

- Wiring, Re-wiring & Upgrading of existing system
- Periodic Inspection, Testing & Certification
- Electric Boilers, Showers & Heating
- Consumer Unit Upgrades
- Internal & External Lighting
- Appliance Connections, T.V & B.T Points
- Fire & Security Alarms
- 3 Phase Installations
- CCTV & Entry Systems

We are fully insured and all work is guaranteed



Please contact us for a FREE no obligation quote...

D.J. Mayhead Electrical Services Ltd, 9 Hollybush, Acton Turville, GL9 1JJ
T: 01454 219 205 M: 07971 684 524 E: info@djmayheadelectrical.co.uk
www.djmayheadelectrical.co.uk

To advertise your business or club, please email:
localtalkbackads@gmail.com



PRIOR & COMPANY
Building on a great reputation!

Experts in all building works,
renovations, conversions, decorating,
kitchens and bathrooms for your
home or business

Tel 01249 782898
enquiries@priorandcompany.com
The Courtyard, Bath Road, Sharnham,
Melksham SN12 8EF



www.priorandcompany.com



MARDEN ROOFING
Taking Service & Quality to new heights!

Specialists in all roofing, Upvc
fascias, soffits and guttering, leadwork,
chimneys and sundry works for your
home or business

Tel 01249 814204
enquiries@mardenroofing.co.uk
The Courtyard, Bath Road, Sharnham,
Melksham SN12 8EF



www.mardenroofing.co.uk

Helping Hands
The Home Care Specialists
Est. 1989



Do you need a Helping Hand?

If you are looking for an **alternative to residential care** or extra support for those everyday tasks that are becoming difficult for you or a loved one – then we're here to help - **from 30 minutes per week to full time Live-in Care.**

Our **Badminton care team** has been providing award winning quality homecare since 1989 and can help with: personal care, housekeeping, help getting around or even to provide a break to an existing family member or care-giver.

To find out how we can help you, call: **01454 643 752** or visit: **www.helpinghands.co.uk**

Great British Winner, UKICA, 2nd NATIONAL DEMENTIA CARE AWARDS, SIA

CHORLEY'S

Free auction valuations
Regular fine art & antiques sales
Insurance & probate valuations

01452 344499
enquiries@chorleys.com
www.chorleys.com

PRINKNASH ABBEY PARK
GLOUCESTERSHIRE GL4 8EU

FRENCHAY CHIMNEY SWEEP

All sweeps certificated
for house insurance purposes
and landlord

Local, professional no mess service

**Contact Paul on
07832 995391**

Village Link
Volunteers transporting the Community

Do you know anyone who might benefit from our services?
or consider joining our volunteers?
Please ask them to call one of our coordinators on
07590 720836

Did you know...

South Gloucestershire Council
fund a loan scheme for homeowners,
for essential home repairs and
improvements?*

For more information, visit **www.wrcic.org.uk**,
call **01823 461099**, or email
enquiries@wrcic.org.uk
Wessex Resolutions CIC
Heatherton Park Studios, Bradford on Tone,
Taunton, TA4 1EU
*** Subject to Status**

CLAPCOTE FORESTRY LIMITED
Established 1981

CLAPCOTE SAWMILL

Specialising in
OAK, LARCH,
DOUGLAS FIR and
ALL NATIVE HARD
& SOFT WOODS
for beams, lintels
planks (inc. air dried)
& fencing materials

Suppliers of best quality
hardwood logs, cut and
split to your requirements

 **KINDLING**

**ENGLISH LUMPWOOD
BARBECUE CHARCOAL**

**SWEET CHESTNUT
FENCING STAKES**

WOOD CHIP

Telephone : Norman and Diane Matthews
YARD & OFFICE 01666 837230
or visit our yard between Grittleton and Hullavington
to discuss your requirements

MARSHFIELD & WICK TAXIS
01225 892005 07703 703475

Cotswold Couriers
Covering South Glos and North Wilts
4 – 16 seats Wheelchair access vehicles
Luggage transfers, Airports, Hen & Stag Nights,
Weddings, School Contracts
Coaches by arrangement

BEAUFORT TAXIS
01454 313721 07703 703475
4,6,8,16 AND 40 SEATERS
Functions, Airports, Any distance, 24 hours
(BEAUFORT MINIBUS & TAXIS LTD)

Disclaimer

The articles in this magazine reflect the personal opinions of the writers and not those of the Editorial Team. Furthermore, the Editorial Team are not responsible for any errors of fact printed in the magazine. Advertising is accepted in good faith. The LTB cannot be held responsible for loss, damage or injury arising out of goods and services sold through any adverts in this magazine. The appearance of an advert in the magazine does not imply any endorsement by the Editorial Team of either the company or its services, nor does it constitute a recommendation. All articles written and submitted should have a contact name and telephone or email information, please. No part of this publication may be reproduced without the prior consent of the publisher.

BADMINTON SOCIAL CLUB (HIGH STREET)

BINGO NIGHT – EVERYONE WELCOME DOORS OPEN

7.00PM EYES DOWN 7.30PM



SUNDAYS – 2nd, 16th February

MEAT RAFFLE AFTER BINGO



NEW OPENING HOURS

All week 7.30pm onwards (Closed Thursdays)

(Open 7.00pm on
bingo weeks)



All new members welcome

**Don't forget to follow us on social
media for our latest updates**

