

Local Talk Back

JUNE 2020

ISSUE 505



Oxe-eye daisies (sometimes known as Moon daisies). Picture by Yvonne Nettles



A MAGAZINE WITH NEWS, VIEWS AND REPORTS FOR THE RESIDENTS
OF ACTON TURVILLE, BADMINTON AND LITTLE BADMINTON

JUNE 2020 --- ANNOUNCEMENTS

As a result of the current coronavirus situation, many of the events planned over the coming months have been cancelled. Thanks to everyone who contacted Local Talk Back to provide us with updates.

FOX & HOUNDS TAKEAWAY SERVICE NOW AVAILABLE

The Fox & Hounds in Acton Turville has introduced a takeaway service, available between 5pm and 8pm on Thursday, Fridays and Saturdays. The menu includes all the traditional favourites like fish & chips and sausage & chips, as well as burgers and the ever-popular chicken tikka with rice and poppadum. Ordering is simple, just call 01454 218224, pay over the phone and collect your food by the front door.



THANK YOU

Local Talk Back has received numerous calls and emails from people who want to say thank you to our two local shops. Both The Stores in Acton Turville and Drewetts Stores in Badminton have provided, and are continuing to provide, invaluable support to our communities during the current situation. We know how much extra effort both of these establishments have put in to ensure the shelves remain stocked, and how they have been able to help individuals with a wide range of requests including home deliveries. To Tim, Iris, Rachel, Julie & Kay in Acton Turville, and Lesley & Wayne in Badminton, your efforts are truly appreciated by so many members of our community.

Shop locally. Support our local businesses.

CAROL BARRETT

On behalf of Paul, Martin, Anthony, Maureen, Wayne, Richard and myself, I would like to say thank you for all your sympathy cards and flowers received.

It has been such a comfort to know you were thinking about us at this difficult time.

It has been a really tough few weeks, but the support and kind words received has helped us to make it through.

Carol will be forever in our hearts and a thought away.

Wendy Chappell

Local Talk Back is printed by

SPRINT PRINT, 33 STATION ROAD, YATE, BS37 4PS

Tel: 01454 852255 or email: info@sprint-print.co.uk

Items for Local Talk Back email to: localtalkback1975@gmail.com Tel: 01454 218267

To advertise in Local Talk Back, please email Pauline on: LocalTalkBackAds@gmail.com

PLEASE SEND IN ARTICLES FOR THE JULY LOCAL TALK BACK BY 15TH JUNE

LIST OF BUSINESSES ADVERTISING IN THIS TALK BACK

**(if using these advertisers please tell them that you
saw it here in the Local Talk Back)**

- 4 COUNTIES OIL TANKS
- BELGRAVE HOUSE DENTAL
- CHIMNEY SWEEP, FRENCHAY
- CHORLEY'S Auction Valuations
- CLAPCOTE FORESTRY LIMITED - SAWMILL
- COACHSTYLE MOT TESTING STATION
- D. J. MAYHEAD ELECTRICAL SERVICES
- FARM SHOP AT HAWKESBURY
- FOOT HEALTH CARE
- THE FOX & HOUNDS INN, ACTON TURVILLE
- FOXLEY PLUMBING & HEATING
- HELPING HAND – Care in the home
- LB COMPUTER SERVICES
- MARDEN ROOFING
- MARSHFIELD & WICK TAXIS
- MATTHEW BUTLER BOOKS
- M & M BUILDERS AND CARPENTRY
- THE OLD HOUSE AT HOME INN, BURTON
- PERRY BISHOP & CHAMBERS – Estate Agents
- PJD HOME IMPROVEMENTS
- PRIOR & COMPANY - Building, Renovations etc.
- PUMPKINS NURSERY
- STW MAINTENANCE
- VILLAGE LINK – Community transport
- WESSEX RESOLUTIONS - Loans for homeowners

DONATIONS RECEIVED THIS MONTH

We have received the following donations this month for which we are very grateful:

W Chappell - £25

RD Owen - £10

Anonymous - £20

Anonymous - £30

In addition, £25.00 was generously donated in the local shop boxes.

Thank you!

We very much appreciate all donations as it helps to keep the Local Talk Back being delivered to your doors.

There are Local Talk Back collection boxes in Acton Turville Stores, Badminton Stores and Badminton Village Club.

***To donate by cheque, please make payable to:
LOCAL TALK BACK and send to
The Treasurer, Local Talk Back,
Church Farm House, The Street, Acton
Turville, Badminton, S.Glos, GL9 1HL***



May's Mystery Egg Picture

In last month's Local Talk Back we published a picture of a mystery egg discovered by Bridget Hope in her garden, and asked readers to identify it. Ray Bird thinks he might know what it is. Based on its size, shape and colour (a sort of plain olive brown), Ray believes it's a pheasant's egg. For several years there have been several that wander around the village and even come into the gardens, so that sounds like a plausible answer.

Many thanks to Ray for getting in touch and solving the mystery.

EDITORIAL JUNE 2020

Welcome to the June edition of Local Talk Back. June is officially the month when summer begins, either on the first of the month for those who like to carve the year into four seasons of three full months apiece, or on the summer solstice, which this year is Saturday the 20th June. For many people, the summer solstice is a deeply spiritual day, one that has been marked since pre-history with rituals and festivals, some of which continue to this day. It is a time to celebrate, to look forward, to plan, to give thanks.

One of the most well-known events takes place every year at Stonehenge, where, on the summer solstice, the sun rises behind the Heel Stone and directs its rays towards the heart of the monument, magically illuminating the central altar. The summer solstice has historically attracted large crowds to Stonehenge, made up of pagans, druids and the generally curious who want to absorb the atmosphere of this special day. This year things will be slightly different though: the summer solstice will be live streamed. No need to set the alarm and head down towards Amesbury to catch the sunrise with 10,000 other people in a Wiltshire field, instead just watch events as they occur from the comfort of your own home via your phone, laptop or tablet. A Pagan ceremony for the 21st Century, if you like. I'm sure there will be many who say it's no match for the real thing (and I suspect they might be right), but it's another example of the novel way in which technology is being used as we battle through the current coronavirus situation.

I must admit I've been really impressed at the way technology has been able to adapt so quickly. A plethora of computer-based tools have emerged which have allowed people to work from home for long periods, holding "virtual" meetings and sharing information like never before. Several companies are openly questioning the very need to have expensive offices, and the concept of sitting behind a desk with your work colleagues for eight hours a day suddenly sounds very old fashioned. We've also seen "virtual" sports becoming more mainstream, where people can compete on-line with someone who could be anywhere on the planet. On-line shopping is also booming, whether that's the weekly grocery shop from Tesco's or Sainsbury's or spur-of-the-moment purchases from Amazon or ebay, but even then there's some very clever thinking which ensures the delivery vans make the most effective use of their journeys and don't just randomly hop from one destination to the next.

But what if you're not fascinated by this technology? What if the prospect of your weekly shop being just a mouse click away fills you with dread, and the only keyboard you want to use is one that comprises a neat row of black and white keys? What if you actually like the company of other people and look forward to the warm welcome you receive when you meet a friendly face? I've been struck by the number of people who have contacted Local Talk Back, expressing appreciation for those who offer the human touch: the local shops who have worked tirelessly to support us over these difficult months with one-off orders or home deliveries, or the neighbours who have been there to help out, or just to chat. We're very fortunate to have such a positive community spirit, and it's been difficult to see schools, churches and other meeting places like our pubs and clubs remaining closed for such a long period. The signs are positive though, with a number of restrictions being eased. It'll be a long time before things are back to normal, but there seems to be light at the end of the tunnel. Real light, not "virtual" light. And when better for it to begin than in the month of June.

Until the next time
IAN CARTER

Badminton Memorial Hall Centenary

1920 – 2020

The History and Development of the village hall – Part One



Badminton Village Hall was built as a Memorial to the 18 men from the village who were lost in the First World War. It was opened in 1920 and the following information has been collected from several sources.

Badminton Hall Committee: From the first recorded Minutes of the proposed Memorial Hall – April 15th 1919

Present: Her Grace the Duchess of Beaufort (Louise, wife of the 9th Duke of Beaufort)

Messrs A M Miller; R H Chichester; H Long; E J Drewett; A Davis, A J Polglass; J Pearce, T N Dickenson; Rev Gibbs; H England (Sec). The Committee was called to inspect halls etc., and if possible to select the one thought most suitable.

It was proposed that Her Grace, the Rev Gibbs, M Dickenson and one representative of the Parish Council go and view a building in the Malmesbury Road, Chippenham, on April 25th. Her Grace kindly offered to convey same. M Drewett remarked that he would like the whole Committee to inspect the building and that he would convey the remainder. M Drewett would get in touch with M Rudman, the builder of the Chippenham building, to see if he would meet the Committee there on April 25th.

Meeting 7th July 1919: Capt. Poore produced plans of the Memorial Hall received from Mr Rudman. After discussion the plans were accepted as shown and specifications to be asked for.

Meeting 1st August 1919: The plans were finalised and at this meeting Mr Drewett reported that he had visited Mr Rudman, who would give a written guarantee that the maximum amount for building the hall would not exceed £1,800, extra if special timber used for the dance floor. Mr Rudman was asked to start at once and to take charge of the building work.

(The hall was built between August 1919 and April 1920)

Meeting 9th January 1920

The Rev. Gibbs stated that he had paid Mr Rudman £1,300 towards the cost of building the hall. It was decided to raise a loan from the Bank later on to pay the balance required. The Secretary to write to Mr Werrett for estimates for lighting and heating. Her Grace, Capt. Poore and E G Drewett were appointed to find out particulars as to the kitchen range. It was decided to leave the seating and furnishings till later on. Her Grace promised to provide a Drop Curtain. Her Grace, Capt. Poore and J Pearce were appointed to deal with setting out the Front and Drive in.

Her Grace promised a tablet with names suitably inscribed to be hung inside the hall.

Meeting 13th February 1920

£14 was allowed in the estimate to provide grates and kitchen range. Lights to be fixed in the hall and recesses of the stage.

Continued.....

The Memorial Hall Centenary cont.

Names to be inscribed on the tablet to be placed according to rank.

	age	
Captain M A de Tuyll	-26	10 th Hussars
Sec-Lt. W Markham	-32	Scot Guards
Corp. E H Hunter M.M.	26	13 th Hussars
Cpt. F J Woodham	-19	14 th Glos Regt.
L.Cpl. W J Newman	-	4 th Canadian Int. Batt
Gunner G D Weedon	-26	R.F.A.
Pte. G W Abbott	-19	Royal Bucks Regt.
Pte. T J Box	-20	Kings R Regt
Pte. W Gulwell	-32	12 th Glos Regt.
Pte. H Hinton	-31	Royal Glos Hussars
Pte. E C Hulbert	-22	8 th Glos Regt.
Pte. P Lord	-	4 th Hussars
Pte. F W Matthews	-23	Royal Glos Hussars
Pte. G Pearce	-	Coldstream Guards
Pte. F H Perks	-22	3 rd Grenadier Guards
Pte. C Roberts	-29	Gloucestershire Regt.
Pte S C Russell	-19	Royal Berks
Pte. S A Wood	-24	28 th Batt. Canadian Exped. Force

The following are excerpts from The Badminton Parish Magazine (from Rev Gibbs monthly letters)

Feb 1920

Work is going on to build the Memorial Hall. A large part of the roof is on. A grand fancy dress ball was held to swell the funds for the hall.

Three successful dances given in Badminton by the Memorial Hall Committee, The Women's Institute and the Federation of Demobilised Soldiers and Sailors. The Men's Club lent them all their Billiard Room during the Winter. The Duchess gave £1,000 to the Memorial Hall in memory of her son Captain Maurice de Tuyll.

March 1920

The Memorial Hall is almost completed. There was a purchase of a cinema and electric light plant from the Australian Soldiers Camp at Sutton Veney near Warminster. The money was borrowed from the bank. It cost £339 and was brought to Badminton in the Hound Van.

April 1920

The Hall is now built. A dance was held in the Servants Hall. Profits of £9 were for the Memorial Hall fund.

May 1920

My first year here has been a very happy one and I hope now that the Hall is built we shall be able to do more for our village life than we have been able to do up to the present.

June 1920

The month of May has really seen the Badminton Memorial Hall opened to everyone's delight. The ceremony performed on Sunday 16th May by Her Grace the Duchess of Beaufort, without whose interest and generosity the Hall would never have been built.

The proceedings began with a procession from the Old Portcullis (Badminton Village Club). The stage of the Hall was decorated very prettily with flowers and palms, the names of the fallen crowned with a laurel wreath formed the centre of the decorations. The hall will seat between two and three hundred people and has a large stage for concerts and theatricals. By the Autumn electric light will be installed in the building and also a cinema. By next Summer we hope to have lawn tennis and bowls in full swing outside the hall. The evening after the hall was opened a dance was held in the hall which realised a profit of six pounds, ten shillings for the hall funds. Everyone in the village has helped by patronising the dances which have raised over one hundred pounds.

Rev J S Gibbs

The cost of the Hall, Cinema and lighting was £2,170.

Funds raised were:

Duchess of Beaufort	£1,000
Badminton Village Club	£188
Proceeds from dances	£100
Proceeds from Gymkhana	£100
Proceeds from Fetes	£200
Other donations amounted to	£96

The remainder was borrowed from the bank.

Continued.....

Badminton Memorial Hall Centenary continued

An Article from THE SOUTH GLOUCESTERSHIRE CHRONICLE – MAY 21ST 1920

An interesting function took place at Badminton on Sunday afternoon, when Her Grace the Duchess of Beaufort opened the Village Hall, which had been erected as a Memorial to the men who fell in the Great War from the parish of Badminton. There was a large attendance probably every family in the parish being represented, and the beautiful service in the peaceful surroundings was very impressive.

The hall, which is in the centre of the village, is well built from a design and particulars, obtained by the Committee after inspecting other halls, and has a seating capacity for about 300 persons. It is up-to-date and has a permanent stage with ante-rooms and all conveniences. It is contemplated adding a cinematograph and electric light installation, and a heating apparatus. A drop curtain for the stage is to be provided by the Duchess of Beaufort. A capital arrangement is made for storing the chairs under the stage when it is necessary to clear the hall. The hall will prove a great boon to the village, which, prior to its erection, had no place for public entertainments. The cost was raised by public subscription, helped by a handsome donation from the Duke and Duchess of Beaufort, and a donation from the Village Club.

The Sherston Brass Band played suitable music on the green at the entrance to Badminton House, and a procession was formed, headed by the Processional Cross from the Parish Church, and comprising the surpliced choir, Archdeacon Tetley (of Bristol), a former

Curate of Badminton, the Rev. J S Gibbs (vicar), about 100 demobilised men, and many of the parishioners. On arrival at the hall Her Grace the Duchess of Beaufort unlocked the doors, and said she had great pleasure in declaring their War Memorial, the Village Hall, opened. The hall was soon filled, and a most impressive service took place.

Among those present, in addition to the Duke and Duchess, were Lady Diana Somerset, Baron F. de Tuyll, Mr and Mrs W.A. Harford and Miss Harford, Colonel Brinton, Captain Poore (estate agent), the following members of the Committee: Messrs H. Long, J.Pearce, A.J.Polglass, A.J.Davis, and E.G.Drewett (churchwarden) and many others. On the platform, on a pedestal draped with the Union Jack, was the Roll of Honour containing the names of those fallen, surrounded by a laurel wreath under large palms, with a base of beautiful flowers and ferns.

The service opened with the singing of the hymn "O God our help in ages past". The reading of 3rd chapter of the Wisdom of Solomon, by the Archdeacon followed.

The Vicar, in a short, appropriate address, said they had met there that day to do honour to the bravery of those men to whose memory that hall had been built, and they thanked God the work had been accomplished. They felt that if those men were there they would be glad that room was built. He asked them to remember before God the names of the fallen, which were read out.



Seated: Louise, wife of 9th Duke of Beaufort.

2nd from right: Maurice de Tuyll – the second son from the Duchess of Beaufort's first marriage to Baron Charles Frederic de Tuyll. Maurice died aged 26 in the First World War and is mentioned on the Memorial Hall plaque.

3rd from right: Henry, later to be 'Master' the 10th Duke of Beaufort.



Louise, Duchess of Beaufort in her Red Cross nurse's uniform. The Red Cross Hospital was in the Portcullis Hotel, Acton Turville

The Harmonics Sing for Charity

The Harmonics are a small group of singers based in Kington Langley, Wiltshire, who are usually out-and-about performing to raise money for charity.

This year, due to the Coronavirus lockdown, we are not able to go out and sing, so we decided to record songs on our phones from home, including the beautiful and timeless "Over The Rainbow". The finished video is available on YouTube via this link: <http://youtu.be/T8i0t61y5Gw> (or search "The Harmonics – Over The Rainbow").

This summer, our chosen charities are **Mind**, the mental health charity, and **Dorothy House**, who provide palliative and end-of-life care and support. Hopefully, the video will provide some much-needed donation funds to support them in their vital work.

Please spread the word by watching and sharing the video and, if you can, make a donation to either of these wonderful charities.

If you would like to find out more about The Harmonics, or are interested in joining us, please send an email to harmonics.choir@gmail.com.

Thank you so much.

Pauline Henson

Hollybush Close, Acton Turville



Sudoku

June's challenge set by Neil Fozard

To solve the puzzle, each row, column and 3x3 box must contain each of the numbers 1 to 9.

EASY !!

	6		9		1			
			2	3		8		
							4	
1	7		4			5		
	4	5		6		9	7	
5		8	1					
2			6	4			8	
	9	6		5				

NOT SO EASY !!

			6				3	
	3	9		2				4
	5		8	4				
	1				8			
						2	6	
	8					7		5
7	2						4	
		3	1		5	6	2	
		5						

Answers to the May quizzes:

'Easy'

6	3	7	8	4	9	5	1	2
8	2	5	6	1	3	4	7	9
4	9	1	5	2	7	8	3	6
3	5	2	9	6	1	7	4	8
9	7	4	2	5	8	1	6	3
1	6	8	7	3	4	2	9	5
7	4	9	3	8	5	6	2	1
5	1	6	4	9	2	3	8	7
2	8	3	1	7	6	9	5	4

'Not so Easy'

1	7	6	4	9	3	2	5	8
4	2	5	7	8	6	9	1	3
8	9	3	5	1	2	4	6	7
7	5	8	2	6	4	1	3	9
6	3	1	9	5	7	8	4	2
9	4	2	8	3	1	5	7	6
3	6	9	1	2	5	7	8	4
2	1	7	6	4	8	3	9	5
5	8	4	3	7	9	6	2	1

ACTON TURVILLE PARISH COUNCIL

No meetings at present

*Please! No Dogs are allowed on the playing field or in the play area.
All gates must be kept shut. No vehicles are allowed in or on the playing field except by permission of the Parish Council. Please put all litter in the bins provided. Thank you.*

May 2020

Playing Field

'Wednesday 13th May 2020: The Parish Council has taken note of the Government's recent [announcement](#):

"You can use outdoor sports courts or facilities, such as a tennis or basketball court, or golf course – with members of your household, or one other person while staying 2 metres apart. Team games are not permitted. You cannot use an outdoor gym or playground."

Accordingly, the Acton Turville Tennis Court will re-open, effective May 13th, while the Play Area will remain closed until further notice. Residents wishing to use the Tennis Court should visit <http://actonturville.info/tennis/> for more information.'

As stated above, the Play Area itself will remain closed. We would like to thank you again for your co-operation during these unprecedented times.

Meetings & information

Please continue to check the Parish Website for the latest updates and the link to further information for this area.

Sybil Haddrell (Acting Chair) 218772, Sally Smith 218510, Chris Bennett 218550, Toby Evans 219116,

Parish Clerk: Sue Radford-Hancock Tel: 218675

Email: actonturvillepc@aol.com Website: www.actonturvilleparishcouncil.org

South Gloucestershire Council News



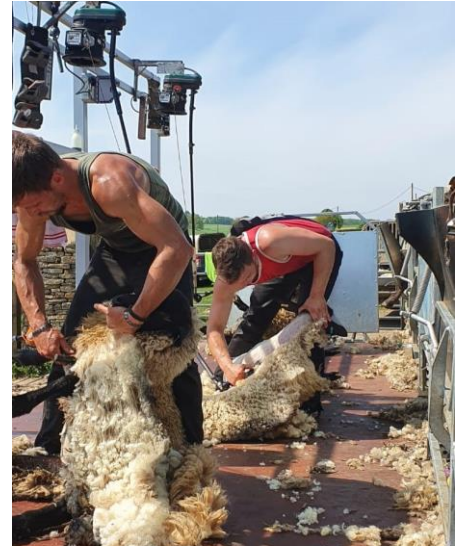
South Gloucestershire Council's waste collection service for bulky household items such as furniture, large domestic appliances and mattresses has now been reinstated after being temporarily suspended due to the coronavirus outbreak. Up to three items can be collected for £29.00. To book, call 01454 868000.

Sort It recycling centres at Mangotsfield, Thornbury and Yate are now accepting a full range of waste, after initially being re-opened for disposal of "essential waste" only. The sites are also continuing to offer extended opening hours (6am to 6pm, 7 days a week). The sites are expected to be busy so traffic management systems have been introduced to keep vehicles moving.

Sheep Shearing on the Farm

The sheep shearers usually come from New Zealand or Australia but this year due to the worldwide Coronavirus the shearers are from much nearer to home. Jake and Tom from Cirencester and Ali from Wales sheared about 700 sheep a day between them, and due to the limited number of shearers available had started the season early, shearing 7,000 between them before arriving here.

Photos by Mike Bird



Fashion Corner

Local Talk Back likes to think it has its finger on the pulse when it comes to fashion. This month, we sent our roving reporters out to see what was proving popular on the equine fashion front, where the winter turnout rugs have been replaced by light-weight fly sheets. Let's see what our best-dressed horses and ponies are wearing this year.



First of all we have Snaafi (32) and Elliot (25) enjoying the Little Badminton sunshine, protected from the bites of horse flies by their lovely zebra coats. Owner Yvette explains that the zebra pattern was adopted after it was noticed that zebras didn't get bitten as much as plain coloured horses. Apparently the flies are confused by the pattern.

Meanwhile, a recent arrival in Acton Turville is Tony (the Pony). He is pictured here looking very smart in one of the many outfits chosen for him by his owner Lisa. As a miniature Shetland, Tony is probably too small for the flies to spot, so a plain fly sheet works just fine for him.



Church Matters

June 2020 Letter from the Vicar

Dear Parishioners,

I write having just enjoyed the celebrations of the 75th anniversary of VE day. I am sure there will be pictures in this edition of those celebrations.

The sermon I preached on Sunday, the 10th of May quoted Michael Morpurgo's question in an article to the paper earlier this year:

'It is not sufficient to merely blow the bugles, to count the gravestones. We have to also ask, why did it happen – this Second World War, the Nazi occupation of Europe – that made it necessary for so many to die in the struggle for liberation. And what lessons can we learn from this tragedy that engulfed the world? Each of us has to try to find the answers to these questions'.

George Steiner (RIP Feb 2020) the American philosopher/writer writing about anti-semitism, suggested that hatred of the Jew resulted from Jewish idealism (ie Moses, Jesus and Marx). If you reject that idealism, then that can become guilt, which in turn can become hatred. I am not sure I buy that argument, as it seems to me that what works on the individual level does not necessarily transfer to the political.

But, what was the psychology of the Nazis? That they should be so dictatorial, racist and imperialistic? The German nation may have felt embittered and bruised by the Treaty of Versailles but the Nazis were clever in their manipulation of these hurts.

It seems to me, that particularly nasty and stupid people have a way of getting themselves into key positions and then poisoning others with their twisted and hateful views. This is the danger of power. What made the Nazis so lethal was the vacuum of economic power, into which Hitler came with his answer of Fascism. Maybe, this is what we have to be careful to avoid.

There used to be a way of recognising that a chap was a 'good egg'. Or that a person was a 'good 'un'. These days, people often go for skills and persona, rather than goodness. Maybe that is one of the lessons of the war. It is not enough to be clever, it is also important to be decent. To have a moral compass.

Jesus said 'be as wise as serpents and innocent as doves'. That is one response to Morpurgo's question?

This comes with my prayers and best wishes,

Rev Richard Thomson

Contact details:

Priest in charge, Withymoor Vicarage, Old Down Rd. Badminton GL9 1EU

Benefice website: www.badmintonchurch.org.uk

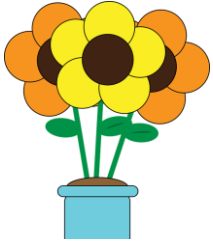
Email: revrichardthomson@gmail.com

Tel. 01454 219236

Mobile 077 177 91858

Coronavirus Update

Please note that churches remain closed due to the current Coronavirus outbreak. However, a series of virtual services are available to view on YouTube. Just search for "Badminton Benefice" and you'll find Matins and Evensong at 10am and 6pm on Sundays.



J J'S GARDENING BLOG

There are some lovely plants out at the moment to feast your eyes on. The wisteria has been special, particularly the ones that bloom before the leaves bust into leaf. It is well worth seeking out that type if you are looking for a wisteria to plant. Some that look spectacular are in Didmarton, two in Luckington and another in Acton Turville, all of them can be seen from the road. Other plants which are looking lovely at the moment are the blue-flowered, evergreen ceonothus. These come as a medium sized upright shrub or there is a prostrate type which can drape itself over a bank, slope or wall. Sisyrinchium will flower through June and July with soft yellow coloured flowers and slightly bluish upright leaves similar to an iris. Secondly, it looks after itself, doesn't get eaten and doesn't need staking.

Tip of the Month

If you have a narrow garden, consider dividing it in half. It doesn't sound sensible, but it makes the garden much more interesting. If you can view the whole of a garden at once, it's all over too soon. One part could be for a more private seating space with a fire pit with the remainder close to the house. Lots of possibilities.

Jobs for this Month

Keep earthing up the potatoes. Bamboo or hazel poles for the beans? Bamboo is rather slippery, hazel slightly rough, so the beans cling to the hazel easily. Be ruthless about cutting back or shortening anything growing in the wrong direction or with a bare stem with a tuft of leaves on the end. A compact specimen is what is needed. Remove any dead bits that have been hidden (I'm sure you've already done this and your garden is looking immaculate!)

Choosing Plants for the Garden

Anyway, time to talk about some lovely plants to put in your gardening note book. These are some of my own recommendations:

- A fern, athyrium type, with green and silver leaves turning orange in the autumn and then discretely disappearing until next year.
- Ammi manus and orlaya grandiflora, annuals, slightly along the lines of cow parsley. Good for cutting, if you can spare some.
- Cerinthe major purpurascens.
- Clematis. Choose the height and time of flowering you would like, there is a huge choice nowadays.
- Brunnera, an excellent ground cover plant, with sprays of small blue flowers and either green leaves or with silver or cream variegation leaves.
- For a gorgeous evergreen scented climber, trachelospermum is excellent.

Plant some dahlias for cutting. There is a huge choice of colour and height and plenty that are not so in your face now. The low growing shrub with tissue paper like flowers and large single blooms, excellent for pollinators. Always reminds me of somewhere warm for a holiday in France.

A place to visit

When we can once again visit some of the special gardens we have nearby, Iford Manor is a charming garden in a lovely setting. It is very special, and they have a new head gardener too.

TERRY TRIPP'S FOOTBALL LEAGUE POSITION COMPETITION 2020

SITUATION AS AT 16TH MARCH 2020

POS	NAME	PREM	CHAMP	LEAGUE 1	LEAGUE 2	TOTAL
1	Mike Bird	Liverpool	Leeds	Coventry	Exeter	88
	Bev	Man City	Fulham	Coventry	Crewe	88
3	N Parker	Liverpool	Fulham	Coventry	Plymouth	87
4	Bruce	Liverpool	Leeds	Portsmouth	Plymouth	86
	Mac	Liverpool	Leeds	Portsmouth	Plymouth	86
6	John Jacobs	Liverpool	Leeds	Sunderland	Plymouth	83
7	Dan Smith	Man City	Leeds	Sunderland	Plymouth	82
8	Paul Bright	Man City	Fulham	Sunderland	Swindon	81
	Paul Gardener	Man City	Fulham	Peterboro	Plymouth	81
10	Doug	Man City	Fulham	Sunderland	Plymouth	80
11	Dave Smart	Man City	Leeds	Portsmouth	Bradford	79
	Terry Tripp	Man City	WBA	Ipswich	Swindon	79
13	Martin	Liverpool	Fulham	Ipswich	Plymouth	78
	Matt (OHH)	Liverpool	Fulham	Portsmouth	Bradford	78
15	Dom	Liverpool	Leeds	Sunderland	Bradford	77
	John Smith	Man City	WBA	Portsmouth	Salford	77
17	Justin	Man City	Leeds	Sunderland	Salford	75
	Glenn	Man City	Leeds	Sunderland	Salford	75
	Steve Tripp	Man City	Fulham	Portsmouth	F. Green	75
20	Pat	Man City	Leeds	Sunderland	F. Green	74
21	Lewis	Man City	Fulham	Peterboro	F. Green	73
22	Saint Mike	Liverpool	Derby	Sunderland	Plymouth	72
23	Nick (pub)	Liverpool	Leeds	Blackpool	Bradford	71
24	Mike Stinchcombe	Man City	Bristol City	Bristol Rovers	Swindon	70
	Keith Huxley	Man United	Fulham	Ipswich	Northampton	70
26	Steve Plenty	Man City	Cardiff	Sunderland	Salford	67
	Becky	Man City	Leeds	Portsmouth	Mansfield	67
	Paul Gardener	Man City	Leeds	Portsmouth	Mansfield	67
	Keith Burgham	Man City	Leeds	Portsmouth	Mansfield	67
30	Luke Harbour	Man City	Fulham	Portsmouth	Mansfield	65
31	Brian Sprules	Arsenal	QPR	Sunderland	Swindon	64
32	Mike Bendeaux	Spurs	Leeds	Sunderland	Mansfield	58
33	Dave Bright	Man City	Leeds	Lincoln	Mansfield	56
34	Yvonne	Liverpool	Derby	Sunderland	Mansfield	54

With football matches suspended since the middle of March, it looked for a long time like this could well be the final placings for the 2019/2020 season, leaving Mike Bird and Bev sharing top spot on an impressive 88 points apiece. However, it's just been announced that competitive football will re-commence on the 17th June, so the battle for top honours will continue. Who will come out top? With five people separated by just two points, and the top ten separated by only eight points, one thing's for sure – it's going to be a tight finish!

Badminton Sports Desk

The Farm Shop at Hawkesbury

- a proper farm shop -

Open Fridays 2pm - 6pm & weekends 10am - 4pm

Free Local delivery

01454 238215 / 07929947149



Finest quality Pork, Lamb & Aberdeen Angus Beef
"Hawkesbury Born, Hawkesbury Bred, Hawkesbury Fed"
"The Water Hog" Pig Roasts with all the trimmings!
France Lane Farm, Hawkesbury Upton, GL9 1AN.
www.ajmorganfarmproduce.com

HOME COMPUTER PLAYING UP? NEED SOME HELP? DON'T DESPAIR!

For help with:

- Windows XP, Vista, 7, 8, 10 and Tablets
- The Internet, Wireless Router Setup
- Hardware Upgrades and Repairs
- PC's Custom Built to order

No problem too small or large!

Contact Lloyd Buckingham

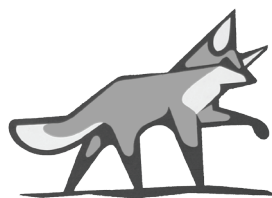
Tel: 07940155064 or 01454 260504

Email: lb_cs@hotmail.com

LB Computer Services



YOUR LOCAL, LOW COST,
HOME COMPUTER REPAIRER



FOX
& HOUNDS INN

Acton Turville, nr Badminton
GL9 1HW

01454 218224

Good Home Cooked Food
All occasions catered for - contact us for details

TAKEAWAY FISH & CHIPS
TAKEAWAY MENU AVAILABLE

Binend Wines from £14.50 per bottle

BEER GARDEN & LARGE CAR PARK

B&B accommodation available
All En-Suite



The Old House at Home

Burton

Telephone 01454 218227

www.ohhpubs.co.uk



Food served all day, every day
12 noon - 9.30 p.m.

Gourmet Burger Night

Every Thursday

All Burgers £10 (G/F available)

Take-away available

To advertise your business or club, please email:

localtalkbackads@gmail.com



PUMPKINS NURSERY

Badminton & Tormarton

Nursery Care and Pre-school Education
catering for children aged 1 year – 5 years

Open all year 8am – 6pm

Pre-school sessions, mornings/afternoons/school days

Nursery Education Grant funded sessions available

Forest School sessions run at both settings

For more information or to request a prospectus
contact

01454 219400 / 218747

or email Amanda Wallis at

enquiries@pumpkinsnursery.co.uk

or visit our website **www.pumpkinsnursery.co.uk**

MOT TESTING STATION

COACHSTYLE has an **MOT** station at its
depot at **The Gibb** able to test Cars, Vans,
Camper Vans and Mini Buses

We now do air-conditioning as well as
service and repair on any vehicle

TYRES at competitive prices
General Servicing and Repairs

01249 783366

Ask for Andrew



MATTHEW BUTLER BOOKS

Old Garage House, Acton Turville

butler.books@btinternet.com

01454 218036

Good quality and antiquarian books valued,
bought and sold. Specialities: Architectural
History, Archaeology and Art History.
Browsing by appointment



- Corns
- Nail Trimming
- Verrucae
- Hard Skin
- Athletes Foot
- Ingrown Toenails
- Nail Infections
- Cracked Heels (fissures)

foot health care

Sina Ohms
MCFHP MAFHP

Foot Health
Practitioner

Clinic available at
The Chippenham
Natural Therapy Centre
(above the Lodge Surgery)
Tel: (01249) 443390

Home Visits:
Tel: 01666 838683
Mob: 07593 324128

The Oxford Practice
5 Oxford Street
Malmesbury
Tel: 01666 824560
www.foot-health-care.co.uk



**Belgrave
House**
DENTAL

General Family Dentistry
Crowns and Veneers
Bridges and Dentures
Six Months Smile (tooth
straightening)
Invisalign (clear braces)

Dental Implants
Tooth Whitening
Hygienist
Nervous Patients Welcome
Children under six seen free
of charge

Belgrave House Dental is a state of the art dental practice
in the centre of Tetbury.

We are currently welcoming new patients, so come and
experience customer care from our highly qualified team
offering a wide range of treatment in a stylish welcoming
environment.

Tel: 01666 503403

Email: reception@belgravehousedental.co.uk
www.belgravehousedental.co.uk

8 Market Place, Tetbury, Gloucestershire GL8 8DA

Perry Bishop
and Chambers



Now helping people on the move in North Wiltshire

"I am thrilled that award-winning estate agents Perry Bishop and Chambers are expanding into North Wiltshire and that they have invited me to head up valuations and sales in this special part of the world, where I also happen to live.

If a move is on the cards this year, you can now enjoy a very personal service – from valuation through to sale – with the backing of an established and respected brand when you choose to sell with Perry Bishop."

Call me on 01249 470166 or 07971 244865
for your **FREE consultation** and property advice.

Or email me carolineferris@perrybishop.co.uk



My charity of the year.
Donation from every sale.



Wiltshire Air Ambulance
funded by you, flying for you

To advertise your business or club, please email:
localtalkbackads@gmail.com

Plumbing & General Maintenance



Stewart White

07341 824612

info@stwmaintenance.com

44 Easton Town | Sherston | Malmesbury | SN16 0LS



4 COUNTIES OIL TANKS

SUPPLIED & FITTED

Call: 01666 510510
Mobile: 07966 690807



PJD Home Improvements
All types of DIY, painting, decorating and garden maintenance

Paul John Davidson
3 Corvus Cottages
Station Road
Badminton
GL9 1EP

Ring or email for competitive quote
07766680161 or 01454 219371
paul.davidson123@btinternet.com

M & M Builders And Carpentry
GENERAL BUILDING AND LISTED PROPERTY

Mike Brazier

M: 07779944773 T: 01454 218765
mikebrazier50@gmail.com
www.mandmbuild.co.uk




**3 Tormarton Road, Acton Turville
Badminton, S.Glos, GL9 1HP**

Foxley Plumbing & Heating

Oil boiler installation, servicing & repairs
Oil tank replacement
Heating installation & repairs
Bathroom installations
Unvented cylinder systems
No job too small

Tim Hibberd
Malmesbury (01666) 822863
Mobile: 07966 462202
Email: foxleyph@btinternet.com



D. J. Mayhead
ELECTRICAL SERVICES
DOMESTIC • INDUSTRIAL • COMMERCIAL

- Wiring, Re-wiring & Upgrading of existing system
- Periodic Inspection, Testing & Certification
- Electric Boilers, Showers & Heating
- Consumer Unit Upgrades
- Internal & External Lighting
- Appliance Connections, T.V & B.T Points
- Fire & Security Alarms
- 3 Phase Installations
- CCTV & Entry Systems

We are fully insured and all work is guaranteed



Please contact us for a FREE no obligation quote...

D.J. Mayhead Electrical Services Ltd, 9 Hollybush, Acton Turville, GL9 1JJ
T: 01454 219 205 M: 07971 684 524 E: info@djmayheadelectrical.co.uk
www.djmayheadelectrical.co.uk

To advertise your business or club, please email:
localtalkbackads@gmail.com



PRIOR & COMPANY
Building on a great reputation!

Experts in all building works, renovations, conversions, decorating, kitchens and bathrooms for your home or business

Tel 01249 782898
enquiries@priorandcompany.com
The Courtyard, Bath Road, Shaw, Melksham SN12 8EP



www.priorandcompany.com



MARDEN ROOFING
Taking Service & Quality to new heights!

Specialists in all roofing, Upvc fascias, soffits and guttering, leadwork, chimneys and sundry works for your home or business

Tel 01249 814204
enquiries@mardenroofing.co.uk
The Courtyard, Bath Road, Shaw, Melksham SN12 8EP



www.mardenroofing.co.uk

Helping Hands
The Home Care Specialists
Est. 1989



Do you need a Helping Hand?

If you are looking for an **alternative to residential care** or extra support for those everyday tasks that are becoming difficult for you or a loved one – then we're here to help - **from 30 minutes per week to full time Live-in Care.**

Our **Badminton care team** has been providing award winning quality homecare since 1989 and can help with: personal care, housekeeping, help getting around or even to provide a break to an existing family member or care-giver.

To find out how we can help you, call: **01454 643 752** or visit: **www.helpinghands.co.uk**

Great British Winner
UKICA
3rd NATIONAL DEMENTIA CARE AWARDS 2014
SIA

CHORLEY'S

Free auction valuations
Regular fine art & antiques sales
Insurance & probate valuations

01452 344499
enquiries@chorleys.com
www.chorleys.com

PRINKNASH ABBEY PARK
GLOUCESTERSHIRE GL4 8EU

FRENCHAY CHIMNEY SWEEP

All sweeps certificated
for house insurance purposes
and landlord

Local, professional no mess service

**Contact Paul on
07832 995391**

Village Link
Volunteers transporting the Community

Do you know anyone who might benefit from our services?
or consider joining our volunteers?
Please ask them to call one of our coordinators on
07590 720836

Did you know ...

South Gloucestershire Council fund a
Home Improvement Loan Scheme
for homeowners and landlords*

We understand the expense of maintaining your home and want to help you to take the stress out of funding repairs, improvements or adaptations to your home

We see you as an individual, not a credit score

For a free, no obligation home visit or more information, contact:

Wessex Resolutions CIC
01823 461099
or visit **www.wessexresolutions.org.uk**

* Subject to eligibility

CLAPCOTE FORESTRY LIMITED
Established 1981

CLAPCOTE SAWMILL

Specialising in
OAK, LARCH,
DOUGLAS FIR and
ALL NATIVE HARD
& SOFT WOODS
for beams, lintels
planks (inc. air dried)
& fencing materials

Suppliers of best quality
hardwood logs, cut and
split to your requirements

 **KINDLING**

**ENGLISH LUMPWOOD
BARBECUE CHARCOAL**

WOOD CHIP

**SWEET CHESTNUT
FENCING STAKES**

Telephone : Norman and Diane Matthews
YARD & OFFICE 01666 837230
or visit our yard between Grittleton and Hullavington
to discuss your requirements

MARSHFIELD & WICK TAXIS
01225 892005 07703 703475

Cotswold Couriers
Covering South Glos and North Wilts
4 – 16 seats Wheelchair access vehicles
Luggage transfers, Airports, Hen & Stag Nights,
Weddings, School Contracts
Coaches by arrangement

BEAUFORT TAXIS
01454 313721 07703 703475
4,6,8,16 AND 40 SEATERS
Functions, Airports, Any distance, 24 hours
(BEAUFORT MINIBUS & TAXIS LTD)

Disclaimer

The articles in this magazine reflect the personal opinions of the writers and not those of the Editorial Team. Furthermore, the Editorial Team are not responsible for any errors of fact printed in the magazine. Advertising is accepted in good faith. The LTB cannot be held responsible for loss, damage or injury arising out of goods and services sold through any adverts in this magazine. The appearance of an advert in the magazine does not imply any endorsement by the Editorial Team of either the company or its services, nor does it constitute a recommendation. All articles written and submitted should have a contact name and telephone or email information, please. No part of this publication may be reproduced without the prior consent of the publisher.

Picture Gallery



Clockwise from left:

Sheep in Little Badminton enjoying some shade, and bluebells providing some much-needed colour, photographed by Yvonne Nettles.

Alastair Gilbert's VE Day celebrations.

A family of geese enjoying the tranquillity of Park Pond, photographed by Martin Gentry.

